



TMU
TAIPEI
MEDICAL
UNIVERSITY

Contents

TMU Chronology	02
A WORD FROM PRESIDENT	08
Introduction of Colleges	
College of Medicine _____	12
College of Oral Medicine _____	14
College of Pharmacy _____	16
College of Nursing _____	18
College of Public Health _____	20
College of Medical Science and Technology _____	22
College of Humanities and Social Sciences _____	24
College of Biomedical Engineering _____	26
College of Management _____	28
College of Nutrition _____	30
College of Interdisciplinary Studies _____	32
TMU Healthcare System	
Taipei Medical University Hospital _____	36
Taipei Municipal Wanfang Hospital _____	37
TMU Shuang Ho Hospital _____	38
TMU Hsin Kuo Min Hospital _____	39
TMU Taipei Cancer Center _____	40
TMU Taipei Neuroscience Institute _____	41
Taipei Municipal Xingai Residential Long Term Care Institution	42
International Medical	
Health Care Beyond Borders _____	44
Lead regionally, connect globally _____	46
A Welcoming Campus for International Students _____	48



February 23, 1960
Two founders of the College, Dr. Shui-Wang Hu and Chien-Tien Hsu, photographed in front of the College's preparatory office on Hankou Street.



June 11, 1960
Group photo of the inaugural class.



August 1, 1976
Taipei Medical University Hospital.



February 15, 1997
Taipei Municipal Wangfang Hospital.

September 8, 1959

The Board of Trustees for "Taipei Medical College" is formed, with Dr. Shui-Wang Hu serving as the chairman. Dr. Chien-Tien Hsu becomes the first president of the college.

June 1, 1960

Taipei Medical College is established with the approval of the Ministry of Education.

June 11, 1960

June 1st was designated as the College's anniversary Day. "Honesty and Simplicity" was selected as the school motto.

August 1, 1960

The School of Medicine, School of Dentistry and School of Pharmacy are established, and welcome the inaugural class.

June 1, 1970

The 10th anniversary is celebrated with the first college-wide sports event and the launch of the alumni association.

August 1, 1976

The Taipei Medical College Hospital, later known as Taipei Medical University Hospital, officially opens.

August 1, 1983

The first master program of the Graduate Institute of Pharmacy is established.

May 1989

The Student Council is established.

February 15, 1997

Taipei Municipal Wangfang Hospital, the second affiliated hospital, opens.



Taipei Medical University



2008
The medical mission in The Kingdom of Eswatini.



July 1, 2008
Shuang Ho Hospital



TMU Taipei Cancer Center

September 8, 2000

Taipei Medical College is renamed Taipei Medical University (TMU) with the approval from the Ministry of Education.

2004

Taipei Municipal Wangfan Hospital is elevated to a medical center.

2006

TMU is awarded more than NT\$600 million in grants from the Ministry of Education's Project of Promoting Teaching Excellence for ten consecutive years.

2008

TMU dispatches medical missions to operate continuously in two African diplomatic allies.

July 1, 2008

Shuang Ho Hospital, the first Build-Operate-Transfer project commissioned by the Ministry of Health and Welfare, officially opens as TMU's third affiliated hospital.

2010

The CSR reports of TMU and its three affiliated hospitals obtain international accreditations (AA1000 and GRI G3).

2011

TMU passes the university evaluation conducted by the Ministry of Education.

2012

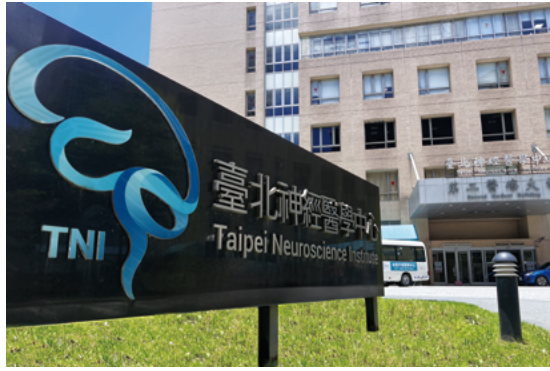
All three affiliated hospitals receives US Joint Commission International (JCI) accreditation twice or thrice.

TMU and three affiliated hospitals are awarded Executive Yuan National Quality Award. (The 13th, 20th, 21st, 22nd respectively)

2013

A medical mission is dispatched to The Republic of Marshall Islands.

TMU Taipei Cancer Center is established.



TMU Taipei Neuroscience Institute



Hsin Kuo Min Hospital



August, 2022
The plan for Shuang Ho Campus was approved by the Ministry of Education

March 2015

TMU collaborates with Ningbo Medical Center Lihuli Hospital to launch a new model of cross-strait healthcare cooperation.

2018

TMU is awarded an annual funding subsidy of NT\$267.4 million from the Ministry of Education's Higher Education Sprout Project, totaling NT\$1.34 billion over five years.

June 18, 2019

TMU starts a cooperative management model with Hsin Kuo Min Hospital.

April 21, 2018

TMU Taipei Neuroscience Institute opens.

October 18, 2020

Taipei Cancer Center Building is completed.

July 2022

A medical mission is dispatched to The Republic of Somaliland.

May 17, 2023

TMU is awarded a subsidy of NT\$276 million from the Ministry of Education's Higher Education Sprout Project Phase II for 2023, ranking 10th nationwide.

June 1, 2023

TMU Shuang Ho Campus officially opens.

March 2024

Shuang Ho Hospital is elevated to a medical center, while Taipei Medical University Hospital is upgraded to a prospective medical center.

May 2, 2024

Taipei Municipal Xing'ai Residential Long-term Care Institution opens

LEADING FOR THE FUTURE – A WORLD-CLASS UNIVERSITY

A message from President Mai-Szu Wu

Founded in 1960, Taipei Medical University (TMU) is a leading private university with 11 colleges and one general education center. The university is home to 6,000 students and has educated nearly 50,000 graduates who serve the society with purpose and make impacts around the world.

TMU has seven top affiliated institutions in Taipei, which includes TMU Hospital, Taipei Municipal Wanfang Hospital, Shuang Ho Hospital, Hsin Kuo Min Hospital, Taipei Cancer Center, Taipei Neuroscience Institute and Taipei Municipal Xing'ai Residential Long-term Care Institution. Of these, Wanfang Hospital and Shuang Ho Hospital are upgraded to medical centers, while TMU Hospital is listed as a quasi-medical center. Together, the institutions provide 3,300 beds with 9,000 faculty and staff members.

Over the past 60 years, TMU has evolved into one of Asia's top 100 innovative universities committing to our purpose of "cultivating biomedical talents with humanity, innovation and global perspectives." We have been actively developing an education system that integrates teaching, researching, industry-academic collaboration and medical care. We make great achievements in academic, research, medical service and innovative R&D in the biotechnology industry. Our education performance has also been widely recognized at home and abroad.

TMU consistently performs well in both local and international university rankings. In the 2024 Times Higher Education (THE) World University Rankings, TMU is ranked 403rd globally and 3rd among Taiwanese universities. We are also ranked in the top 101-200 universities in the 2024 THE World University Impact Rankings and have risen to 25th in the QS World University Rankings for Nursing, while maintaining our No. 1 position in Taiwan.

In domestic rankings, TMU was named No. 1 in Global Vision Magazine's 2024 Top University Rankings for small and medium-sized universities. We are especially recognized in areas such as SDG impact, student-to-teacher ratio, the average number of books purchased per student in the past three years, and net revenue per student.

In the Essential Science Indicators (ESI) 2024, TMU achieved greater results with 12 categories ranked among the top 1%, with Materials Science being the latest addition to our consistently high-performing 12 areas, including Clinical Medicine, Pharmacology & Toxicology, Neuroscience & Behavior, Biology & Biochemistry, Immunology, Chemistry, Psychology/Psychiatry, General Social Sciences, Molecular Biology & Genetics, Agricultural Sciences, Ecology & Environment and Materials Science.

In an era of globalization and rapid social changes, TMU is committed to integrating the UN Sustainable Development Goals (SDGs) into our school affairs. We are leading in SDG 3-Global Health and well-being and focus on the development in line with our positioning: "An innovative university with positive social impact based on solid medical education and clinical application for biomedicine."

In education and research, we prioritize practical solutions, achieving innovative R&D outcomes, and fostering entrepreneurial spirit. We also aim to quickly adapt to change while seeking external resources and support. These efforts allow TMU to drive societal and economic development.

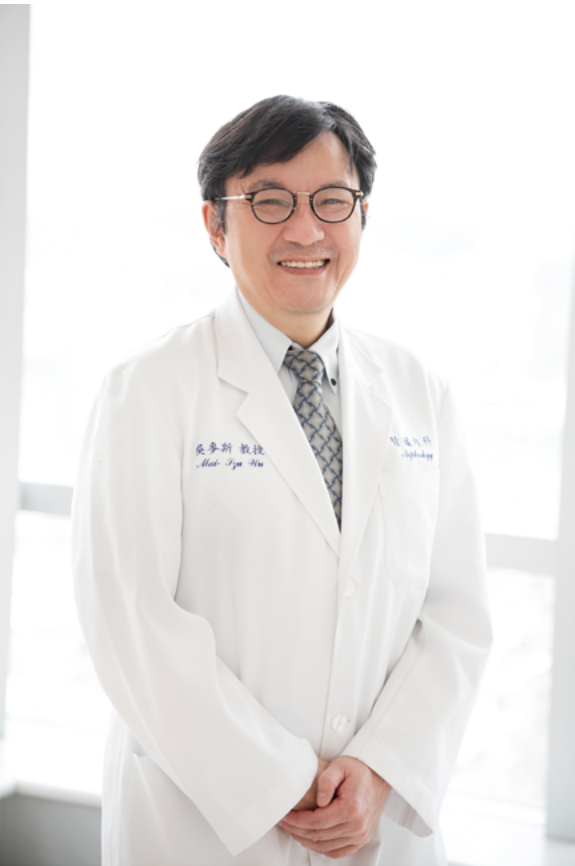
At TMU, we nurture diverse biomedical talents based on the belief of "educate for the future" and aim to become a world-class medical university. By keeping three attitudes: modesty with confidence, empathy with rigor, and curiosity with caution, and following four directions of practicing value-based healthcare, driving digitalization, creating a talent-friendly environment and forging sustainable development, we firmly believe that the TMU and its seven affiliated institutions will work closely to open a new era for the university.

In June 2023, TMU officially launched the Shuang Ho Campus, marking the first step in our third wave of growth. Together with the nearby Shuang Ho Hospital's medical and administrative buildings, the Shuang Ho Campus spans over 214,500 square meters. This pioneering "trinity" biomedical park integrates

the resources of a medical university, a medical center, and the biomedical industry. Looking ahead, we aim to incorporate cutting-edge technologies in gene, cell, and immunity research. We will also collaborate closely with research institutes and innovative enterprises to integrate AI, big data, medical materials, and engineering in the training of biomedical talents for precision health and other R&D fields. Meanwhile, we strive to become a leading incubator for translational medical research and the biomedical industry.

Looking forward, we will reinforce the "TMU One Campus" concept and concentrate on developing four areas: "value-based healthcare," "digital value-added services," "talent-friendly strategies," and "sustainable development." With a vision of "Leading for the Future," we are continuously improving medical capabilities, education quality, and research outcomes, while building global connections.

From teaching and research to clinical trials, from industry collaborations to entrepreneurship, and from social responsibility to sustainable development, we are committed to driving sustainability, contributing to society, connecting with the world, and nurturing future talent. Our mission remains to safeguard health and well-being, achieve value-based healthcare, and rise as a world-class medical university.



INTRODUCTION OF COLLEGES

Taipei Medical University



Departments

School of Medicine

School of Respiratory Therapy & Master Program In Thoracic Medicine

Graduate Institute of Clinical Medicine

Graduate Institute of Medical Sciences

Master Program in Thoracic Medicine, School of Respiratory Therapy

The International Master / Ph.D. Program in Medicine

International Ph.D. Program in Cell Therapy and Regenerative Medicine & Masters Industry Co-op Program in Cell Therapy

In-Service Master Program in Artificial Intelligence in Medicine

Honors and Specialties

Dual Degree Programs

Canada: Dalhousie University (Ph.D.), Institut de Recherches Cliniques de Montréal (Master's)

United States: Georgia State University (Master's), Pennsylvania State University (M.D. + MPH)

Italy: University of Cagliari (Ph.D. & Master's)

Student International Internships

Gap Semester Project: Launched in 2019, the first program of its kind in Taiwan, encouraging undergraduate students to gain hands-on experience through observership programs at top international university laboratories.

Johns Hopkins University: 5+ students annually for summer research

Harvard University: 2 students annually for summer research

Notable Achievements

The first teaching and research-oriented medical school in Taiwan to establish a Department of Respiratory Therapy and a Graduate Institute of Respiratory Therapy.

The first in the nation to establish an International Ph.D. Program in Cell Therapy and Regenerative Medicine.

The first medical school in Taiwan to host a White Coat Ceremony and Matriculation Ceremony for medical students.

Founded in 1960

COLLEGE OF MEDICINE

The College of Medicine cultivates health professionals and leaders with the educational goal of serving local communities. We emphasize humanities in medical education, and help students develop compassion, global vision, communication skill, leadership, social responsibility and international competitiveness. The College comprises seven academic units, up to 550 faculty members including full-time professors, adjunct professors and clinical instructors, and almost 1500 students from our undergraduate, Master's and Ph.D. programs.

The School of Medicine initiated the Freshman Inauguration, Human Anatomy Remembrance Ceremony and White Coat Ceremony in Taiwan. We have also created the On Doctoring Program (Early Clinical Exposure), Objective Structured Clinical Examination (OSCE), and Group OSCE clinical practice training system, which have been regarded as role models for medical schools nationwide. TMU is the first university in Taiwan to establish the School of Respiratory Therapy, which was founded in 2003. The College further established the Master Program in Thoracic Medicine, School of Respiratory Therapy in 2015 to offer the Master's degree in health science with the specialization in respiratory therapy. In 2016, we collaborated with Georgia State University of the USA to institute "Integrated Master's Degree". Through this dual degree program, we provide international academic exchange opportunities with an aim to broaden students' global visions and to cultivate advanced clinical practitioners.

The goal of the Graduate Institute of Clinical Medicine is to train physicians for a career as physician scientists with exceptional research capacities. Three core aspects of our curriculum are Disease-Oriented Research, Research Oriented Learning and Dual Mentorship. We offer courses in clinical trials, translational medicine, clinical & translational epidemiology, clinical evidenced medicine, cell biology, molecular biology, lab rotation and research techniques, applied statistics, research design, advanced paper writing and genetic medicine. With these independent research skills, we envision our graduates to improve the quality of medical care and promote social welfare.

The Graduate Institute of Medical Sciences (GIMS) is specifically designed for graduate students who are interested in translational research in biomedical sciences. GIMS offers master's and doctoral degrees in four programs, including (1) Biochemistry/ Cellular and Molecular Biology (MCMB), (2) Cellular Physiology/Neuroscience Science (CPNS), (3) Molecular

Pharmacology (MP) and (4) Microbiology/Immunology (MI). The goal of Master's Programs in GIMS is to instill our students with fundamental knowledge in biomedical sciences and refined skills in conducting scientific experiments, so that they will become experts in research. The goal of Ph.D. program, on the other hand, is to educate students with the most modern multidisciplinary knowledge and become independent investigators. With an impressive record, GIMS cultivates high-caliber students who start their promising careers soon after graduation.

The International Master/Ph.D. Program in Medicine (IGPM) was founded in 2016. The IGPM recruits international students from Vietnam, Indonesia, United States, Switzerland, Gambia, and Malawi with expertise in clinical professions, biomedical research and healthcare areas. To accommodate individual aspiration, interests and career goals, IGPM designed flexible study schemes and courses for students. These courses are categorized into six areas including (1) Molecular Medicine, (2) Community Medicine, (3) Tropical Medicine, (4) Neurological Medicine, (5) Clinical Medicine, and (6) Healthcare Education. The goal of IGPM is for our students to become elite scholars or scientists with abilities to initiate research projects and conduct independent research, thus play significant roles in their own professional fields. Furthermore, we expect IGPM alumni to build an academic bridge between TMU and their home countries for more international collaborations in medicine and biomedical research.

The International Ph.D. Program for Cell Therapy and Regeneration Medicine (IPCTRM) began to recruit students in the fall semester of 2017. The mission of this program is to promote translational medicine and clinical trials of cell/ stem cell based therapy. IPCTRM provides diverse research topics, including immune cell applications in cancer treatment; blood and mesenchymal stem cells for regenerative processes, wound healing, graft-versus-host disease, and amyotrophic lateral sclerosis; as well as drug screening platform with cancer stem cells and disease-specific induced pluripotent stem cells. IPCTRM brings experts and scientists together to facilitate outstanding research not only in basic study, but also in clinical translational medicine and industrial cell/stem cell product development.

Founded in 2018, In-Service Master Program in Artificial Intelligence in Medicine focuses on the rise of artificial intelligence. The goal of the program is to cultivate interdisciplinary talent by providing integrated courses in artificial intellectual skill and medical knowledge, and to construct precise medicine and technology. We provide in-service specialization program through intensive courses and clinical practice, including analysis of signal/data, semantics, image recognition and clinical medicine, smart hospitals and other professional courses. The program aims to strengthen students' ability to integrate cross field learnings and cultivate artificial intelligence talent for Taiwan's medical industry.

Internationalization and academic excellence are the core missions of the College of Medicine. We regularly affiliate with elite institutions worldwide and work closely with them to seek breakthroughs in medicines. We also expect to deepen and strengthen cross-border cooperation in the medical and biomedical research fields, joining hands to create a future of mutual benefits.



Founded in 2000

COLLEGE OF ORAL MEDICINE

College of Oral Medicine provides the most comprehensive oral medicine education system and the largest oral medicine clinical practice program among the eight oral medicine programs in Taiwan. School of Oral Hygiene, established in 2001, was the first oral hygienist education program in Taiwan. The School of Dental Technology was also the nation's first such program set up in the university system. School of Dentistry was one of the first three schools founded in TMU, and has been the first choice for candidates applying to private institutions.

Highlights of the College's research and development include (i) oral cancer and temporomandibular joint dysfunction, (ii) big data analysis/ data mining, (iii) dental materials, tissue engineering and stem cell applications, (iv) AI and digitalized facial reconstruction (v) 3D computer-aided design and manufacturing (3D CAD/CAM). The College is not limited to training clinical staff, but seeks to connect with both academia and the industry in an effort to cultivate holistic talent who are able to balance education, research and patient care. Furthermore, the College of Oral Medicine is the first dental education college in Taiwan to create four Mini Programs: Ethical Education of Oral Medicine, Artificial Intelligence of Dentistry, Oral Healthcare Management.

The School of Dentistry was established in June 1960. In 1993, the school established a Master's program, while the Ph.D. program was launched in 2004. There are 10 academic divisions, including Operative Dentistry, Periodontology, Orthodontology, Oral and Maxillofacial Surgery, Pediatric Dentistry, Endodontics, Dental Morphology and Dental Materials, Occlusion and Temporomandibular Disorder, Dental Humanities and Oral Hygiene.

The school has been committed to dentistry and clinical education over the years. The department of dentistry offers an Independent Study course, Clinical Clerkship program, and clinical teaching models of OSCE, GOSCE and TRM.

The Master's and Ph.D. programs offer a dual advisor system, which recruits "clinical specialist advisors" and "basic medical researchers" as faculty members.

The School of Dental Technology is the only dental technician program established by the College of Oral Medicine in Taiwan, combining aesthetics with medical humanities and developing a comprehensive curriculum on digital oral engineering automation.

As the areas of practice in oral medicine emerge, the school has planned three research focuses in the Master's program: oral biomaterials, digital oral engineering, and oral tissue regeneration. In addition to obtaining professional certificates, the school expects students to continue with oral medicine studies for the sustainable development in oral technology.

TMU is the first university to establish the School of Oral Hygiene (SOH) that is dedicated to cultivating oral hygiene professionals with humanities, social responsibilities and global visions. The goal is to advance our oral medicine education in accordance with global trends and improve the quality of oral care in Taiwan.

The SOH is equipped with comprehensive facilities including a dentistry skull model classroom, technology lab, and dental clinic model classroom. The school recruits 35 students every year, and invites professionals to offer courses on oral hygiene knowledge, oral hygiene promotion, disease prevention and clinical training. There are special programs on oral hygiene problem-based learning, OSCE test on oral hygiene clinical skills, and international courses on oral hygiene. The school also offers clinical training opportunities at local communities, teaching clinics and dental departments in affiliated universities. These opportunities equip students with both professional/clinical capabilities in oral hygiene, and skills in community education and communication.

The educational purposes of the College are humanism, excellence, internationalization, and research orientation. Our achievements in holistic education, research and development, community service and academic-industry links have won recognitions from the government, the industry, the academia, and the medical community. Our goal is to prepare TMU students to triumph in the global academic community and develop international perspectives.

Departments

School of Dentistry
Bachelor's, Master's and Ph.D. programs

School of Dental Technology
Bachelor's and Master's programs

School of Oral Hygiene
Bachelor's program

Honors and Specialties

Co-hosting the Dual Ph.D. Degree Program with the Graduate School of Dentistry, Osaka University.

Student Exchange Programs in collaboration with QS top universities, including the Institute of Science Tokyo, Tohoku University, Hokkaido University, Michigan University, Tufts University in the field of oral medicine.

Comprehensive education programs in oral medicine in Taiwan with three disciplines in Bachelor's, two disciplines in Master's Program, and the Ph.D. Programs in School of Dentistry.

Achieved recognition as domain-specific benchmarking college under the program on bilingual education for students in college, BEST.

Offers the largest amount of digital education bases for clinical dentistry fitted with the most integrated AR and VR equipment.

Featured for the 'Oral Care Service Team' and 'Overseas Medical Mission,' both of which are devoted to serving remote villages and areas with limited medical resources.



Departments

School of Pharmacy
4-year BS/ 6-year Pharm. D./ Master Program /In-Service Master Program for Clinical Pharmacy / Ph.D. Program

Graduate Institute of Pharmacognosy

Master Program in Clinical Genomics and Proteomics

Ph.D. Program in Clinical Drug Development of Herbal Medicine
joint program with the National Institute of Chinese Medicine of the Ministry of Health and Welfare

Ph.D. Program in Drug Discovery and Development Industry

Honors and Specialties

Dual Degree (M.S./Pharm.D.) with Department of Regulatory and Quality Sciences, University of Southern California (USC).

Dual Degree (M.S./MPH) with Department of Public Sciences, Penn State University.

Student Exchange programs with USC, University of California, Irvine, University of Illinois at Chicago, Tohoku University, Kyushu University and Hokkaido University.

International Academic Collaborations with Tohoku University, Hokkaido University, Kyushu University, RIKEN, KTH Royal Institute of Technology, University of Oxford.

Launched American College of Clinical Pharmacy Taiwan Chapter (ACCP-TW), leading the innovation of clinical pharmacy in Taiwan.

Dr. Chang Wei-Chiao, Dean of College of Pharmacy and the Chairman of Division of Pharmacy and Chinese Medicine (National Science and Technology Council), was awarded the Wu Ho-Su Medical Award (2023), Wang Min-Ning Outstanding Contribution Award, and FAPA Award (2024).

Dr. Liou Jing-Ping, Dean of Office of Research and Development, was awarded the Wang Min-Ning Outstanding Contribution Award (2022). The anti-cancer drug developed by Dr. Liou has been approved by both the IND FDA and TFDA for Phase I clinical trials.

The School of Pharmacy has established an undergraduate pharmacy program in English to enhance pharmacy professionals' English proficiency and improve the international mobility and competitiveness of the next generation of pharmacy professionals.

11 pharmacists hold Board Certification from the Board of Pharmacy Specialties in the US, making the TMU system the leader in Taiwan for the number of board-certified pharmacists.

Founded in 2000

COLLEGE OF PHARMACY

Founded in 2000, College of Pharmacy offers an innovative pharmacy curriculum and enjoys an international reputation in imparting high quality education and training in pharmaceutical sciences and pharmacy practice. The college educates around 200 undergraduate students and 70 graduate students every year. The alumni of the college have established themselves as successful pharmacy professionals and emerged as a force strongly influencing the health care sector by holding leadership positions in the industrial as well as academic sector.

The School of Pharmacy aims to cultivate talents on new drug development and clinical precision medication. Since its establishment in 1960, the school has nurtured more than ten thousands of excellent alumni worldwide. The professional pharmacy programs include a 4-year bachelor program and 6-year Doctor of Pharmacy program. The graduate program recruits domestic and international students. The Department of Pharmacy focuses on pharmaceutical science, including development of new small molecule drugs, the exploration of active natural compounds, the design and synthesis of antibody drugs and biological agents, preclinical pharmacological activity and toxicological assessment, the design and development of new dosage forms and new drug doses, nanotechnology on drug delivery systems, cutting-edge research on drug carrier design, gene delivery, pharmacokinetics and pharmacodynamics. The Department of Clinical Pharmacy collaborates with specialist pharmacists from TMU affiliated hospitals to conduct clinical practice-based research, precision medicine research, pharmacogenomic and proteomics research, pharmacoepidemiology and economics, artificial intelligence and big data analysis.

The Graduate Institute of Pharmacognosy (GIP) is the only institute that comprehensively focuses on pharmacognostic research to investigate herbal drug resources. GIP is actively involved in the study of the physical, chemical, biochemical, and biological properties of natural drugs. More specifically, the GIP 's projects focus on natural medicinal research and clinical practice, such as the development of natural resources in Taiwan, the study of natural products and their biological activities, as well as traditional Chinese medicine. In addition, GIP collaborates with other faculties to develop key talent and the researchers of next generation

who can maximize the benefits of natural medicines. To develop students' interdisciplinary skills by integrating knowledge and clinical experience, GIP has also established industry-academia collaborations by recruiting industry experts as their faculty members.

The Master Program in Clinical Genomics and Proteomics provides the latest training in cutting-edge genomics, proteomics, and metabolomics technologies. We aim to cultivate caregivers and researchers who can apply this training and their clinical knowledge to personalized treatment. We use AI technology to conduct Multi-disciplinary precision medicine research collaborations to achieve the ultimate goal of drug optimization. To foster students' interdisciplinary thinking and broaden their international perspectives, this program invites well-known international scholars as visiting professors and Chair Professor Yusuke Nakamura to enhance the quality of education and research.

Ph.D. Program in Clinical Drug Development of Herbal Medicine aims to cultivate key talents in R&D of Chinese herbal medicine, translational medicine, and the new drug clinical trials, so as to enhance the pharmaceutical R&D and the academic-industry cooperation. It also promotes cross-disciplinary integration and nurture students with creativity, innovation, and entrepreneurial abilities to implement basic pharmaceutical skills and biotechnology into industrial R&D. A joint dual Ph.D. degree program with University of Cagliari has also been signed with the goal to expand student's international horizons and enhance their competitiveness in the field of pharmacy worldwide.

The Ph.D. Program in Drug Discovery and Development Industry is dedicated to advancing new drug development in small and large molecule therapeutics, including bispecific antibodies and antibody-drug conjugates (ADCs). We aim to bridge the gap between theoretical learning and practical application in these crucial domains by integrating research and development capabilities from prestigious universities and research institutes. Our program equips students with the expertise to navigate the complexities of developing innovative therapeutics. We strive to generate pioneering research results and seamlessly translate them into actionable strategies for real-world industries. Our efforts contribute to optimizing the industrial environment and driving biotechnology sector innovation. Guided by sustainable university management principles, we believe in achieving our goals of advancing new drug discovery and development.



Departments

School of Nursing

Offering comprehensive Bachelor's, Master's, and Ph.D. programs

School of Gerontology and Long-Term Care

Specializing in gerontology with Bachelor's and Master's programs.

Post-Baccalaureate Program in Nursing

Tailored to meet evolving healthcare demands.

International Ph.D. Program

In both Nursing and Gerontology and Long-Term Care, promoting global academic exchange.



Honors and Specialties

Taipei Medical University College of Nursing consistently ranks among the top institutions worldwide:

No. 27 in the 2025 QS World Universities Rankings for Nursing.

No. 25 in the 2024 ShanghaiRankings Global Ranking of Academic Subjects for Nursing

Dual Ph.D. Degree with School of Nursing and Midwifery, Western Sydney University.

Dual Ph.D. Degree with School of Nursing, University of Wollongong.

Dual Master's Degree with School of Nursing, Universitas Gadjah Mada.

Shorten Student Exchange Programs with 20 partner universities.

International Academic Collaborations with 33 partner universities across Asia, Europe, Oceania, and North America.

Dr. Ching-Yi Chang was awarded the NSTC Outstanding Research Award

Dr. Pei-Shan Tsai, Dr. Kuei-Ru Chou, Dr. Hsiao-Yean Chiu, Dr. Min-Huey Chung, Dr. Hsin-Yen Yen, Dr. Ching-Yi Chang, Dr. Wen-Pei Chang, and Dr. Chun-De Liao were listed among the World's Top 2% Scientists 2024

Founded in 2000

COLLEGE OF NURSING

To Pursue Innovative Excellence; Promote Sustainable Society

Established in 1963, Taipei Medical University College of Nursing has continually set benchmarks in nursing education and research. Offering a range of Bachelor's, Master's, and Ph.D. programs, the College of Nursing is committed to fostering excellence in nursing and gerontology. Our innovative approach and global partnerships underscore our dedication to advancing healthcare and addressing societal needs.

Programs and Schools

The College of Nursing comprises several distinguished schools and programs:

- School of Nursing: Offering comprehensive Bachelor's, Master's, and Ph.D. programs.
- School of Gerontology and Long-Term Care: Specializing in gerontology with Bachelor's and Master's programs.
- Post-Baccalaureate Program in Nursing: Tailored to meet evolving healthcare demands.
- International Ph.D. Programs: In both Nursing and Gerontology and Long-Term Care, promoting global academic exchange.

Academic Excellence

Taipei Medical University College of Nursing consistently ranks among the top institutions worldwide:

- No. 25 in the 2024 QS World Universities Rankings for Nursing.
- No. 6 in the 2023 ShanghaiRankings Global Ranking of Academic Subjects for Nursing.

Global Partnerships

We foster collaborations with over 200 universities globally, enhancing our educational and research capabilities. Dual degree programs with institutions like the University of Wollongong and Universitas Gadjah Mada enrich our academic offerings, providing students with international perspectives and opportunities.

Innovative Initiatives

Pioneering initiatives define College of Nursing's commitment to innovation:

- Established Taiwan's first International Ph.D. Program in Gerontology and Long-Term Care.
- Home to the Research Center of Active Ageing, integrating smart technologies for holistic elderly care.
- Leading research teams in Mind-Body Research, Evidence-based Translational Research, and Exercise in Elderly and Chronic Disease Research.

Research Excellence

Our faculty spearhead groundbreaking research projects, securing substantial grants from national and international bodies. With a steadfast commitment to evidence-based practices and precision nursing, Taipei Medical University College of Nursing is at the forefront of advancing global healthcare knowledge, particularly in aged care. Our research initiatives are meticulously designed to integrate the latest scientific findings into clinical practice, ensuring superior patient outcomes and enhanced quality of life for the elderly population.

Global Impact

The College of Nursing's dedication to globalization is evident through:

- Annual international conferences and student exchange programs.
- Dual degree opportunities and collaborative research with prestigious international universities.
- Active participation in global nursing associations, enhancing our influence in shaping global healthcare policies.

Conclusion

At Taipei Medical University College of Nursing, we are committed to nurturing the next generation of healthcare leaders. Through cutting-edge education, transformative research, and global partnerships, we continue to innovate and excel in preparing healthcare professionals for a sustainable and inclusive society. Join us in shaping the future of nursing and gerontology on a global scale.

Visit us online to learn more about how you can be part of our vibrant community dedicated to excellence in healthcare education and research. Together, let's pursue innovative excellence and promote a sustainable society.

<https://nursing.tmu.edu.tw/en>



Departments

School of Public Health
Bachelor's, Master's, Ph.D. programs

Graduate Institute of Injury
Prevention and Control
Master's, Ph.D. programs

Master's Program in Global Health
and Health Security
Ph.D. Program in Global Health
and Health Security
All-English program

The Global Health Security
Research Center

Research Center of Health Equity

Dr. Chi-Chin Huang Stroke
Research Center

Honors and Specialties

Established the nation's first Graduate
Institute of Injury Prevention and Control in
2000.

Established the nation's first all-English Global
Health master's and PhD's degree program.

In 2008, Research team honored with 6th
National Innovation Award.

College faculty and students promoted
motorcycle helmet legislation and the
Tobacco Hazards Prevention Act.

College faculty received various domestic
and international honors (National Quality
Awards, Medical Dedication Awards, APACPH
Outstanding Contribution Awards, Ministry
of Health and Welfare Third Class Medal, and
Fulbright fellowships etc.)

College faculty members serve as board
members and advisors for the Ministry of
Health and Welfare and the Taiwan Public
Health Association, playing a key role in
shaping national public health policies and
promoting professional certification for public
health specialists in Taiwan.

Eight postgraduate courses have successfully
obtained accreditation from the Council on
Education for Public Health (CEPH), USA,
ensuring the highest standards in public health
education.

Dr. Feng-Hang Chang from the Graduate
Institute of Injury Prevention and Control was
awarded the 2022 Ta-You Wu Memorial Award
from the National Science Council for her
expertise in the field of "Rehabilitation."
Dr. Po-Chang Lee from the TMU Research
Center for Health and Welfare Policy was
awarded the "Lifetime Achievement Award"
by the Transplantation Society of Taiwan in
recognition of his dedication and contributions
to the field of organ transplantation.

Founded in 2000

COLLEGE OF
PUBLIC HEALTH

Academic Units

The School of Public Health is dedicated to fostering experts in public health and advancing critical health issues, with a focus on three main areas: Epidemiology & Biostatistics, Health Behavior & Policy, and Environmental & Occupational Health. Along with the emerging practice of precision public health, research themes encompass cardiovascular epidemiology, cancer epidemiology, active aging, maternal and child health, environmental exposure assessments, and sustainability and health.

Among the most important initiatives of the School, it is worth mentioning an ongoing longitudinal study that simultaneously recruits both parents and children, assessing health conditions, health behavior, and health risks from environmental factors (such as exposure to heavy metals, e.g., mercury and lead, as well as indoor and outdoor air pollutants, e.g., PM2.5) and psychosocial factors (such as emotions, stress, and parent-child interaction). Within this study, electroencephalogram (EEG) technology is employed to measure brain electrical activity. Furthermore, the Healthy Work Environment Promotion Center has been established to advocate for smoke-free and health-promoting workplaces, accrediting them as Healthy Workplaces. The center has assisted more than 2,000 workplaces in enhancing their environments.

The Graduate Institute of Injury Prevention and Control combines a variety of expertise, including Critical Care Medicine, Disaster Medicine, Emergency Medicine, General Surgery, Neurosurgery, Epidemiology, Biostatistics, Public Health, Transportation, Rehabilitation, and Behavioral Science. The Institute maintains the "Head and Spine Trauma Database," one of the largest trauma databases in Taiwan. Additionally, it has developed the Air Medical Emergency Service Center, which collaborates with the Ministry of Health and Welfare and has played a crucial role in helping the government save substantial public resources by providing emergency medical services to remote areas in the country.

The Master and Ph.D. Programs in Global Health and Health Security offer an all-English curriculum, designed especially (but not exclusively) for foreign students. The programs focus on two main aspects: infectious disease control as a core issue of health security and

the impact of global policy on chronic diseases. In particular, both quantitative and qualitative approaches have been adopted to analyze issues related to the 2005 International Health Regulations for infectious disease control, as well as problems addressed by the WHO Framework Convention on Tobacco Control. Research activities also incorporate elements of AI technology, serving as analytical and solution tools.

A major goal of the program is to cultivate students' international perspectives and understanding of the global context through the organization of international professional forums on precision medicine, biometrics, and disease prevention interventions. Furthermore, a long-term internationalization and interdisciplinary learning platform has been established, facilitating world-class exchanges of innovative knowledge and practical experience to enhance students' international mobility.

In summary, the College of Public Health is fully committed to continuously enhancing the quality of both research and teaching through internal and external accreditation. This commitment includes organizing cross-disciplinary research teams, talent recruitment, resource mobilization, and promoting internationalization. Guaranteeing the development of solid core skills for every graduate and maintaining a high-level scientific production are the keys to making the College of Public Health at TMU a top choice for students in Asia.

Affiliated and Related Research Center

The College of Public Health has three task-oriented affiliated research centers: the Global Health Security Research Center, the Research Center of Health Equity, and the Dr. Chi-Chin Huang Stroke Research Center.

The Global Health Security Research Center aims to enhance research capabilities in combating infectious diseases and strengthen international collaboration for global health security, particularly with countries included in Taiwan's New Southbound Policy. The Research Center of Health Equity envisions eradicating health disparities related to age, sex, socioeconomics, geography, race/ethnicity, and advancing environmental sustainability through specialized research and collaborative empirical capacity building. The Dr. Chi-Chin Hung Research Center of Stroke focuses on advancing and integrating research in the diagnosis, prevention, and rehabilitation of strokes by executing both basic and clinical medical studies, applying research outcomes to elevate clinical practices, and fostering international collaborations in stroke-related research.

In addition, the College of Public Health closely collaborates with The Research Center for Health and Welfare Policy, a university-level research center, to advance the translational applications of health research. Professor Po-Chang Lee, the Director of the center, formerly served as the Director-General of the National Health Insurance Administration at the Ministry of Health and Welfare in Taiwan and is currently appointed as a Distinguished Professor at the College of Public Health.



Departments

School of Medical Laboratory Science and Biotechnology
Bachelor's, In-Service Master and Master programs

Institute of Biotechnology in Medicine

Graduate Institute of Biomedical Informatics
Master and Ph.D. programs

Graduate Institute of Cancer Biology and Drug Discovery
Master

Ph.D. Program for Cancer Molecular Biology and Drug Discovery

Ph.D. Program in Medical Neuroscience
joint program with National Health Research Institutes

International Master Program in Medical Neuroscience

Ph.D. Program for Translational Medicine
joint program with Academia Sinica

International Ph.D. Program for Translational Medicine

International Master Program in Translational Medicine

Honors and Specialties

Professor Yu-Chuan (Jack) Li was elected as the first Taiwanese academician in the American College of Medical Informatics in 2017.

In 2019, Professor Yu-Chuan (Jack) Li and Professor Shioh-Lin Pan received the National Innovator Award.

Professor Jian-Ying Chuang received the MOST Grant for the Columbus Program in 2020.

In 2021, Professor Yu-Chuan (Jack) Li was honored with the 7th National Industrial Innovation Award from the Ministry of Economic Affairs. That same year, Professor Shioh-Lin Pan and Associate Professor Wei-Chun HuangFu received the Future Tech Awards.

From 2021 to 2023, Professor Yu-Chuan (Jack) Li served as the President of the International Medical Informatics Association (IMIA).

In the 2023-2025 academic year, the institution joined the "Program on Bilingual Education for Students in College" (BEST) by the Ministry of Education.

In 2024, Professor Shioh-Lin Pan and her research team were honored with the Boehringer Ingelheim "Unicorn 2.0" Biomedical Startup Award. Additionally, Professor Shioh-Lin Pan, Professor Hsu Kai-Cheng, and Associate Professor Wei-Chun HuangFu received the Future Tech Awards.

Furthermore, in 2021, Professor Shioh-Lin Pan and Associate Professor Wei-Chun HuangFu were also recognized with the National Innovator Award.

Founded in 2011

COLLEGE OF MEDICAL SCIENCE AND TECHNOLOGY

The College of Medical Science and Technology (CoMST) currently consists of one undergraduate department, two graduate institutes, two master's degree program, and five doctoral degree programs. It encompasses five major areas of specialization: Medical Science and Biotechnology, Biomedical Informatics, Cancer Biology and Drug Discovery, Neuroscience, and Translational Medicine.

The CoMST was established in 2010, building upon the foundation of the School's Department of Medical Laboratory Science and Biotechnology and the Institute of Biomedical Informatics in medical applications. Starting in 2010, it collaborated with two major academic research institutions in Taiwan, the National Health Research Institutes (NHRI) and the Academia Sinica, to offer three doctoral degree programs: "Cancer Molecular Biology and Drug Discovery," "Medicine Neuroscience," and "Translational Medicine." Additionally, in 2015, 2017, 2020, and 2022, the college established the "Ph. D. Program in Medical Biotechnology," "Graduate Institute of Cancer Biology and Drug Discovery (Master)," "International Ph.D. Program for Translational Science," and "International Master Program in Medicine Neuroscience," respectively. In February 2023, the college will integrate its five major areas of specialization and degree programs into the Shuang Ho campus, establishing close connections with Shuang Ho Hospital and the international Biodesign program to construct an international Shuang Ho Park jointly, cultivating biomedical talents with a global perspective and creating a benchmark institution with international influence and competitiveness.

The School of Medical Laboratory Science and Biotechnology, established in 1965, has cultivated thousands of outstanding alumni with great performance in industry, government, academia and research fields. The school provides diverse and solid experimental medicine-related courses and practical training. It focuses on cultivating clinical laboratory talents, supplemented by biotechnology industry R&D personnel and medical researchers. In 2015, the newly

established doctoral program in medical biotechnology brought life science research into a new era.

The Graduate Institute of Biomedical Informatics, the first biomedical informatics graduate institute in Asia. In 2015, the institute signed a memorandum of cooperation with Singaporean companies-PULSESYNC and CADI SCIENTIFIC, and started a summer internship program with the two companies in 2016, and also signed with Dsfederal Inc. for summer internship in USA. Clinical informatics uses theories and methods of information technology to support patient care and improve patient-care quality. The research scope of basic medical informatics includes biomedical database, data analysis and exploration, as well as genetic database of diseases, etc. The goal is to develop biomedical imaging and signal processing technology, as well as the integration of information technology and public health, with translational medicine being the direction of future research.

Ph.D. Program for Cancer Molecular Biology and Drug Discovery, driven by the need for clinical medicine, focuses on the development of new cancer drugs and explores fast and effective ways in the early diagnosis and treatment of cancer. In 2017, the school established the Graduate Institute of Cancer Biology and Drug Discovery by combining the existing doctoral programs in cancer biology and drug discovery, thus making its education system more complete with the master's programs. As a result, students are able to establish a solid foundation from the beginning and acquire professional knowledge in cancer biology and drug research and development.

Ph.D. Program in Medical Neuroscience mainly explores the physiological and pathological mechanisms of severe central nervous system injuries and neurodegenerative diseases. The goal is to develop effective drugs or strategies to treat or improve related diseases. In 2022, the college launched the International Master Program in Medical Neuroscience to establish a comprehensive education system that integrates with the Ph.D. Program in Medical Neuroscience, enabling students to learn from the fundamentals and build a solid foundation. The program accepts international students.

The Ph.D. Program for Translational Medicine has established a comprehensive research and educational system in order to cultivate cross-field research talents in translational medicine. In 2020 and 2022, the International Ph.D. Program and Master Program in Translational Medicine were established with the aim of nurturing talented researchers in this field and promoting educational exchanges between the university and foreign educational institutions. Through two-way communication with international graduate students from various countries, the program has gained a better understanding of research topics that meet interational needs.

Exploring health issues in the individual, social, and national levels from a humanities and social sciences perspective.



Departments

Graduate Institute of Humanities in Medicine (GIHM)
Master Program

Graduate Institute of Health & Biotechnology Law (GIHBL)
Master Program

Professional Master Program in Health and Biotechnology Law

Graduate Institute of Mind, Brain and Consciousness (GIMBC)
Master and Ph.D. Program

Honors and Specialties

MOU with Graduate School of Arts and Letters, Tohoku University, Japan.

Student Exchange programs with Tohoku University, Japan.

Associate Professor Niall William Duncan was awarded Ta-You Wu Memorial Award From National Science Council in 2022

Establishment of the Center for Humanities

Innovation and Social Practice:
The college recently established the "Center for Humanities Innovation and Social Practice," aiming to integrate the strengths of medical and healthcare research with scholars from humanities and social sciences. The center seeks to promote interdisciplinary discussions on holistic care and enhance active aging among community residents in various practice settings

Founded in 2011

COLLEGE OF HUMANITIES AND SOCIAL SCIENCES

The College of Humanities and Social Sciences (CHSS) has continuously strengthened internationalization efforts and actively recruited outstanding young talents from overseas. The courses offered by CHSS are taught by domestic and international faculties, and one-third of the courses are in English. In research and teaching, CHSS emphasizes experience and evidence, while also addressing normative issues. In recent years, there has been a particular focus on research and applications related to cognitive experience and functions, integrating experimental science with legal and ethical issues. CHSS is located next to the Shuang Ho Hospital, which enables the college to engage in interdisciplinary collaboration with the healthcare system of hospital.

The Graduate Institute of Medical Humanities (GIMH) is an interdisciplinary graduated institute dedicated to critically engaging with a wide range of issues at the various interfaces between health and society. Our international research team conducts research spanning the fields of medical sociology, health ecology and community care, and science and technology studies. Dedicated to cultivating and expanding knowledge, multiple methodologies are employed within the institute giving special emphasis on promoting wellbeing, both for individuals and communities.

The Institute aspires to expand this knowledge cultivation not only through research, but also through pedagogy. We provide the students with the key critical thinking and analytical skills necessary for bridging the gap between the social sciences, humanities, and medicine.

The major issues we are concerned with Humanistic education in medical training, Equal distribution of medical resources, Ecological development of healthy environment, and Social analysis of medical technology.

The Graduate Institute of Health and Biotechnology Law, established in 2014, is focused on advancing legal research in medicine, biotechnology, and public health. It offers a Master of Technology Law (M.T.L.) degree, with the goal of providing students with the necessary skills to excel in careers related to these fields. The institute fosters collaboration between legal professionals and experts in medicine, biotechnology, and public health, promoting interdisciplinary research and education. As part of Taipei Medical University, the institute benefits

from the university's vast resources in medicine, pharmacy, and public health, integrating these into its curriculum and research programs, and in doing so, creating a unique academic environment unlike any other law school in the country. The comprehensive curriculum covers a broad range of topics, including medicine, biotechnology, public health, and intellectual property law, enabling students to engage in productive interdisciplinary learning. Graduates are well-prepared for diverse career paths in both government and private sectors, contributing to advancements in law, healthcare, and biotechnology. Additionally, starting from the 112th academic year, the institute will launch an in-service master's program tailored to professionals working in the legal, clinical, and business sectors of the biomedical and biotechnology industries.

The Graduate Institute of Mind, Brain, and Consciousness (GIMBC) is established in 2019. This institute, offering both Master's and Ph.D. programs, is Taiwan's first and only all-English curriculum in this field.

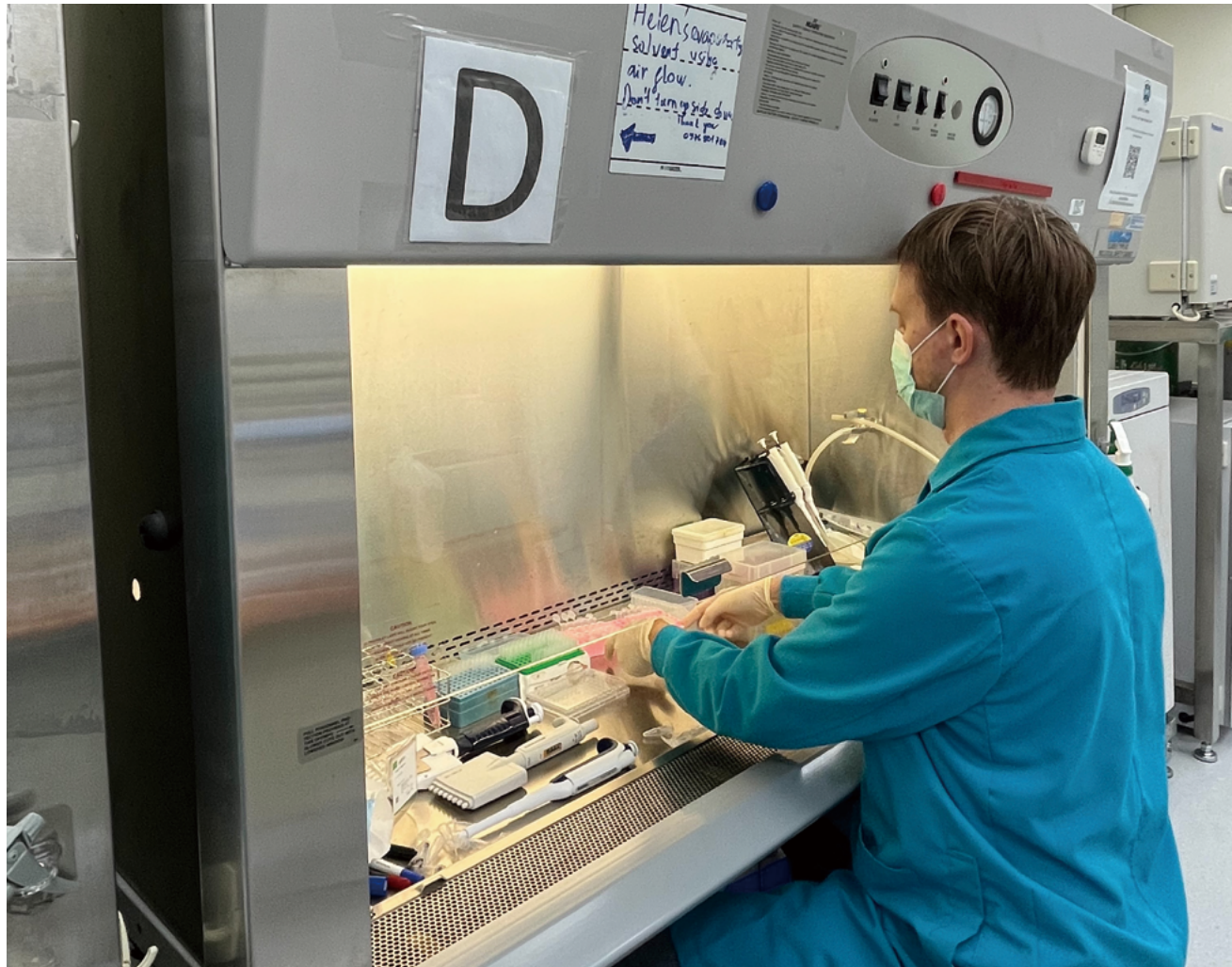
Our mission is to cultivate outstanding interdisciplinary talent in brain science, focusing on consciousness neuroscience while integrating neuroscience, cognitive neuroscience, and clinical research. We aim to enhance Taiwan's visibility in global consciousness research and strengthen international collaborations. The institute addresses the critical need to understand consciousness, a challenge at the intersection of philosophy, science, and medicine. Our research spans from mental disorders to neurological diseases, exploring the cognitive and neurophysiological mechanisms of consciousness.

Leveraging Taipei Medical University's extensive clinical resources, we've created a unique platform combining basic and clinical research. Our approach is characterized by Interdisciplinary integration, Innovative research methods, Advanced technology application, Rich clinical resources, Broad research scope, Humanities-science fusion, and International education. Through these features, we strive to lead in unravelling the mysteries of human consciousness, contributing significantly to both national and international neuroscience research.

Currently CHSS offers MA degrees in social science (GIHM) and in law (GIHBL). GIMBC offers both an MS degree, as well as a Ph.D., in science.

The College of Human and Social Sciences focuses on research and teaching that are consistent in the fields of society, law, and mental processes. It integrates the commonalities and overlaps among these three major areas, including both empirical and normative aspects, which are central to teaching and research in CHSS. To continue moving forward, we use the same spirit to understand diverse opinions and critiques on common academic issues domestically and internationally, and further communicate with outstanding scholars from various countries.

The College of Human and Social Sciences in Taipei Medical University not only embraces academic challenges but also positions ourselves as a challenger in the evolving landscape of knowledge development.



Founded in 2015

COLLEGE OF BIOMEDICAL ENGINEERING

The College of Biomedical Engineering (CBME) was established in 2015 and is focused on inter-disciplinary research at the intersection of basic science, translational medicine, and engineering. CBME faculty possess a diverse variety of educational backgrounds and research expertise, ranging from clinical doctors, surgeons and molecular biologists to materials scientists, electronic engineers and physicists. All CBME faculty are dedicated to improving human health and wellbeing through the application of sound engineering and scientific principles.

Biomedical research and development is one crucial element of Taiwan's economic development roadmap. The market demand for biomedical technologies such as medical devices, diagnostic implants, joint replacements, drug delivery systems, protein therapeutics, tissue engineered grafts, cellular, subcellular and nanomedicine therapies is expanding rapidly. This demand is expected to increase even further as the local and global society continues to age. The Taiwan Society of Biomedical Engineering is currently formulating a board certification mechanism for biomedical engineers. Therefore, we envision that there will continue to be a need for highly-trained biomedical engineers with research experience, and that a degree in biomedical engineering is a sound investment for a successful future career.

CBME provides high quality educational programs at the undergraduate and graduate level, including the offer of internships in affiliated hospitals and private biotech and medical device companies in Taiwan. This provides hands-on practical experience, which is extremely beneficial for students to understand real-world applications of biomedical research. The internationally-directed CBME also provides dual-degree programs and scholarly exchange programs and research collaboration opportunities for students via partnerships with leading institutes such as the University of Southern California, USA; University of Lille, the University of Bourgogne Franche-Comté, FEMTO-ST Institute, and INSERM research units, France; University of Tasmania, Australia; and Tokyo University of Science, Japan.

The Graduate Institute of Biomedical Materials and Tissue Engineering (GIBMTE), Graduate Institute of Nanomedicine and Medical Engineering (GINME), School of Biomedical Engineering (SBME), International Ph.D. Program in Biomedical Engineering (IPBME) and Graduate Institute of Biomedical Optomechatronics (GIBOM) accommodate domestic and international undergraduates, master's, Ph.D. and postdoctoral trainees. All graduate level teaching is conducted in English, and CBME currently has students enrolled from close to 11 different countries, representing a proportion of over 60% at PhD level. We trust that this diverse, clinical needs-centered research and educational environment will generate strong growth momentum for Taiwan's biomedical technology industry and biomedical engineering research at a global level.

Through our continuous efforts, through the unique links our university has with its affiliated hospitals, and due to our location in the dynamic and friendly environment of Taiwan, our College has all the potential to develop into an internationally successful biomedical engineering hub.

Students who graduate from CBME programs have developed into highly skilled biomedical engineers with a strong scientific background who also understand the ethical, social, and economic implications of their work. Moreover, many of our undergraduates continue their education with a graduate degree in engineering, medicine, or life sciences.

Departments

School of Biomedical Engineering
Bachelor's program

Graduate Institute of Biomedical Materials and Tissue Engineering
Master's and Ph.D. programs

Graduate Institute of Nanomedicine and Medical Engineering
Master's and Ph.D. programs

International Ph.D. Program in Biomedical Engineering
Ph.D. program

Graduate Institute of Biomedical Optomechatronics
Master's program

Honors and Specialties

CBME offers a complete educational and research program in biomedical engineering through its undergraduate and graduate programs.

Through CBME Graduate institutes, dual MS and PhD degrees with several foreign universities are available.

A Dual Master's Program has been established with Tokyo University of Science (TUS), Japan.

Dual PhD and Master's Programs have been established with the University of Lille (ULille), France.

A Dual PhD Program has been established with the University of Burgundy Franche-Comté (UBFC), France.

CBME has established several research collaborations with international research institutes and universities throughout the world.

CBME has access to over 130 sister schools in America, Asia, Europe, Africa and Oceania through links established at the TMU level.

CBME is the first in Taiwan to participate in the "Euro-Asian Master in Medical Technology and Healthcare Business Program" (EMMaH).

Dr. Thierry Pierre Robert Burnouf was awarded the Outstanding Contribution to Science and Technology Award by the Executive Yuan.

Dr. Chih-Hua Chen received the 19th National Clinical Innovation Award.

Dr. Chih-Wei Peng received the 21st National Innovation Award for Academic and Research Innovation.

Dr. Szu-Han Wu engaged in research collaboration with Nobel Laureate Weissman's laboratory in the United States.



Departments

School of Health Care Administration
(Bachelor's, Post-Baccalaureate
Program, Master's and Executive's
programs)

Graduate Institute of Data Science

Executive Master Program of Business
Administration in Biotechnology

International Ph.D. Program in
Biotech and Healthcare Management

Health Care Data Science Research
Center

History

1997 Established the School of Health Care
Administration

2013 Established the Biostatistics Research
Center

2015 Established the Graduate Institute of
Data Science

2015 Established the Big Data Research
Center

2015 Established the TMU Big Data Alliance
and Resource-sharing Platform

2015 Began organizing the quarterly
Biotechnology Data Trend Forum in
cooperation with KPMG Global's Office in
Taipei

2016 Established the Executive Master
Program of Business Administration in
Biotechnology

2016 Established the Post-Baccalaureate
Program in Health Care Administration and
Data Science

2018 Signed MoU with the Rogosin
Institute, an affiliate of Cornell University,
for further course collaborations

2019 Signed MoU with the University of
Nottingham, UK

2019 Established the International Ph.D.
Program in Biotech and Healthcare
Management

2023 Signed MoU with Merage School of
Business, University of California, Irvine

2023 Certified by the Association
of University Programs in Health
Administration (AUPHA)

Founded in 2015

COLLEGE OF
MANAGEMENT

Specializing in Smart Healthcare, Big Data and Cultivation of Experts and Leaders in
Healthcare and Biotechnology Management

Taipei Medical University (TMU) established the College of Management in 2015. Based on information integration and innovative management as the foundation, the College responds quickly to the fast-changing society in the competitive environment. We focus on developing and applying information technology and big data on the management of healthcare institutions and the biotech industry. Looking to industry needs for guidance, the College aims to develop a pool of skilled administrative professionals and leaders in the healthcare and biotech industries.

School of Health Care Administration

TMU established the School of Health Care Administration in 1997 in response to the increasing demand for the healthcare industry's administrative personnel following Taiwan's National Health Insurance launch in 1995. Through its bachelor's, master's, and executive's programs, the school has fostered many outstanding professionals in the Taiwanese healthcare industry. The School of Health Care Administration also established its International Master Program in 2009. It was the first to use English as a medium of instruction in Taiwan for international students in health care administration. In addition to exporting Taiwan's healthcare management experience, the program also offers practical assistance to other countries.

In November 2023, the School of Health Care Administration made history by becoming the first in Taiwan and the second outside North America to be certified by the Association of University Programs in Health Administration (AUPHA). This certification reflects the program's exceptional quality and commitment to continuous improvement in teaching, industry collaboration, and international collaboration. It also marks a significant milestone in developing healthcare administration education in Taiwan, demonstrating the program's commitment to high-quality teaching and learning environments.

Graduate Institute of Data Science

The Institute focuses on big data and artificial intelligence development. Our curriculum emphasizes integrated training in innovative applications, technology, data analysis, and planning. We have diverse and experienced faculty to provide academic and professional training in the healthcare, statistics, information, and data science industries. Students are encouraged to apply big data technology and IT to solve practical issues. The institute ultimately has its sights on becoming the premier source of big data talent at TMU.

Executive Master Program of Business Administration (EMBA) in Biotechnology

As reflected in its motto, "Honesty and Simplicity," TMU launched the world-class EMBA program in Biotechnology in 2016. The program strives to cultivate health leaders with a strong commitment to social responsibility by offering quality, internationally recognized programs, developing platforms for teaching and research, and creating opportunities for lifelong learning. Through the cooperation of entrepreneurial students, teaching staff, medical researchers, and the biotechnology program, the program aims to become a globally renowned EMBA in Biotechnology.

International Ph.D. Program in Biotech and Healthcare Management

The program was established in 2019 in response to the trend of big data and AI applications. It aims to provide an integrated education in big data, smart healthcare, and management to cultivate future educators and research professionals and provide students with interdisciplinary and practical knowledge and a solid foundation in research.

Research Center of Data Science on Healthcare Industry

The center is established with three goals: cultivate data professionals, enhance research capabilities and deepen interdisciplinary integration. It aims to utilize data analytics technology in collaborative industrial projects that introduce big data and artificial intelligence while improving research, strengthening multidisciplinary collaboration, and promoting talent cultivation. The Taipei Big Data+ Alliance was set up in December 2015 to provide a platform for collaboration between industry, government, and academia.



Departments

School of Nutrition and Health Sciences
Bachelor's, Master's, Professional Master's, Ph.D. programs

School of Food Safety
Bachelor's Program
Master's Program

Graduate Institute of Metabolism and Obesity Sciences
Master's Program

Honors and Specialties

The FIRST ONE and the ONLY ONE for the College of Nutrition

The FIRST ONE and the ONLY ONE for the School of Food Safety, and MS program in the Graduate Institute of Metabolism and Obesity Sciences in Taiwan

TOP 1 for the Nutrition-related department and a national exam pass rate of Registered Dietitians (RD) in Taiwan

Dual Degree (Ph.D.) Program with Tohoku University, Japan

Dual Degree (M.S) Program with Case Western Reserve University, U.S.A

The MOOC course "Introduction to Nutrition and Food Safety" was awarded the Taiwan Open Education Excellence Award - Outstanding Award (2020, 2024).

International Academic Collaborations with Tohoku University, Ochanomizu University, The Ohio State University, Tufts University, Case Western Reserve University, Chulalongkorn University, Singapore Institute of Technology.

Set up three college-level Research Centers
Research Center of Nutritional Medicine
Research Center of Geriatric Nutrition
Research Center of Food Safety Inspection and Function Development

Founded in 2016

COLLEGE OF NUTRITION

Based on the concept of "Life counts on health, and health counts on nutrition," the School of Nutrition and Health Sciences, founded in 1979, is the first school of the College of Nutrition, with master's program, professional master's program, and doctoral programs established in 1995, 2000, and 2002, respectively. The school provides trainings in areas of therapeutic nutrition, nutrition research, food service management, and quantity food production, planning, and management, aiming to strengthen public health promotion. The school has over 3,300 outstanding alumni in the nutrition-related field, and has the highest passing rate for the registered dietitians in the nation.

With increasing emphasis on food safety and need for food safety experts, we established Taiwan's first master's and bachelor's programs in food safety in 2016 and 2017 respectively. These programs aim to enable students with capabilities of risk assessment, crisis management, research and practical skills, problem discovering and solving, and global perspectives. The goal is to foster more outstanding professionals in this field so that they can provide the knowledge in food safety to the society.

As an approach towards preventive medicine, and to promote public health on the issue of weight management and metabolism, we established Taiwan's first master's program in the Graduate Institute of Metabolism and Obesity Sciences in 2017. By integrating research and practice in translational medicine from bench to bedside, the program aims to cultivate interdisciplinary specialists in community prevention and clinical intervention of obesity and metabolic diseases.

In addition to teaching, the college also dedicated efforts to conduct research works and fulfill social responsibility. The Research Centers of Nutritional Medicine and Geriatric Nutrition were established in 2016 and 2017 respectively to integrate research, development, and application in functional foods and nutritional care for the elderly by combining clinical and basic research.

Being the first College of Nutrition in Taiwan, we offer extensive resources in bridging the students with the global community. We provide a number of international activities including exchange student programs, international internships, summer school programs, and dual-degree programs in partnership with world-renowned universities. Furthermore, we continue to expand the MOOCs curriculum as well as promote academia-industrial cooperation. The College of Nutrition strives to become the home to the best professionals in nutrition and food safety in Asia.



Departments

Interdisciplinary Learning Center

Establish interdisciplinary course and program
Develop interdisciplinary teaching alliance

Innovation Entrepreneurship Education Center

Cultivate students creativity and innovation ability
Establish and strengthen the innovation and entrepreneurship program

Digital Initiative Center

Set up credit bank and learning guide
Cultivate students' lifelong continuous learning

Honors and Specialties

National Innovation Award : Entrepreneurship
Development Award (2021)

University Program for Advancing Digital Learning
and Innovative Applications : Outstanding Schools for
Excellence in Digital Learning Development (2022)

Smart Innovation and Interdisciplinary Talent Development
Program : Ministry of Education ITSA Outstanding School
Award (2022)

Grand Prize for MediaTek's "Smart Hometown" digital
social innovation competition & AI Environmental
Sustainability Award (2024)

Student Startup Team Wins Double Championship and
National Top Prize of One Million (2023)

Student Startup Team Member Selected as Million-Dollar
Recipient of Diageo "Keep Walking Dream Fund" (2024)

Founded in 2017

COLLEGE OF
INTERDISCIPLINARY
STUDIES

The College of Interdisciplinary Studies (CIS), established in 2017, is one of the first interdisciplinary studies programs in Taiwan that has been institutionalized in universities.

The college serves as a bridge connecting and coordinating between general education, professional and clinical studies. Our mission is to help students develop problem-solving ability sets and break the boundaries to reach academic and professional goals. All programs in CIS provide students with the opportunities to obtain five key skill sets: 1. problem identification skills 2. innovation, entrepreneurship, and execution skills 3. teamwork skills and the ability to communicate and cooperate with others 4. global adaptation ability 5. lifelong learning skills.

There are three centers in the CIS: Interdisciplinary Learning Center, Innovation Entrepreneurship Education Center and Digital Initiative Center. We are located in the center of the TMU campus in the Auditorium Building, with a 500-ping space created for students to focus on interdisciplinary learning and maker education.

The Interdisciplinary Learning Center aims to promote interdisciplinary education and develop advanced programs. The center also leads a faculty-based learning community to increase cooperation among different colleges or areas of studies. There have been 22 interdisciplinary mini programs offered by the center,

including Mini-program in Artificial Intelligence, Design Thinking, One-Health Metaverse and Global Impact & Outreach. The center is planning more learning programs to help faculty and students further develop interdisciplinary perspectives.

The Innovation and Entrepreneurship Education Center provides students with resources and supports needed for innovation and entrepreneurship by gathering related resources from events and courses. Our goal is to expose students to experiences in entrepreneurship practice from innovative thinking to entrepreneurial activities. We also work to create an entrepreneurial environment and cultivate entrepreneurial spirit that encourages students to try and not be afraid of failures.

The Digital Initiative Center carries forward the MOOCs (Mass Open Online Courses) and introduces excellent curriculums to enhance global learning experiences and reach local internalization. The center initiates a digital self-learning fund and work with digital learning platform Coursera to launch the "Coursera for Campus" program, making TMU the first university in East Asia to launch such a program.

The program adopts an annuity system that offers each student with subsidies of certificate fees and recognizes up to 8 course credits, encouraging students to learn from the world's best MOOCs and cultivate a culture of life-long learning. In addition, the center proactively promotes innovative technology in teaching through VR installations and experience activities.

CIS offers well-equipped facilities and dedicates its efforts to promote interdisciplinary studies, aiming to cultivate biomedical talent for better development of Taiwan's health ecosystem.

TMU HEALTHCARE SYSTEM

Taipei Medical University



The Taipei Medical University Healthcare System includes the world-class Taipei Medical University and seven affiliated institutions:

Taipei Medical University Hospital

Taipei Municipal Wanfang Hospital

TMU Shuang Ho Hospital

TMU Hsin Kuo Min Hospital

TMU Taipei Cancer Center

TMU Taipei Neuroscience Institute

Taipei Municipal Xingai Residential Long Term Care Institution

A combined capacity of more than 3,300 beds puts us among the largest healthcare systems in metropolitan Taipei. We deliver comprehensive and coordinated services by integrating primary and specialty care with research and education.

Founded in 1976

TAIPEI MEDICAL UNIVERSITY HOSPITAL

Taipei Medical University Hospital (TMUH), the first affiliated hospital of Taipei Medical University (TMU), was founded in 1976 and has established a strong foundation in clinical service, medical research, and education. By 2024, the hospital was upgraded to a pre-medical center, significantly enhancing its medical quality.

Located near the TMU campus, the university and the hospital unite as one. TMUH, as a university-affiliated hospital, upholds the core values of "Service, Education, and Research." It also actively strengthens its capabilities in critical and rare disease treatment, with specialized medical services in cancer, cardiology, geriatrics, pediatrics, and international healthcare.

Continuing the core values of "patient-centered, staff-oriented, and pride in TMUH," the hospital has actively promoted holistic healthcare in recent years, advocating for "five wholeness" in medical care. It expands the scope of medical care from disease treatment to encompass mental well-being, providing patient-centered healthcare and aiming to become the strongest support for patients.

In line with TMU's commitment to sustainable operation, TMUH is dedicated to achieving sustainable development goals, deepening its focus on health, well-being, and quality education. In 2023, it received seven awards from Taiwan Institute for Sustainable Energy, ranking first among national hospitals.

As it strives for excellence, TMUH continues to develop its medical specialties, enhance teaching and education, and deepen research and innovation. It aims to become an internationally renowned university medical center, building a trusted hospital through high-quality medical care and establishing a medical brand of excellence that fills its staff with pride.



Contact Information

No. 252, Wuxing St., Xinyi Dist., Taipei City
11031, Taiwan

Tel +886-2-2737-2181 ext. 8424,8428,8429
Email ihc@h.tmu.edu.tw

Founded in 1997

TAIPEI MUNICIPAL WANFANG HOSPITAL

Wanfang Hospital was opened on February 15, 1997, entrusted by the Taipei Municipal Government to Taipei Medical University to operate, as the second affiliated hospital of Taipei Medical University, combined with the basis of two-way communication between clinical services and teaching and research of Taipei Medical University and all colleagues, Wanfang Hospital passed the medical policy committee in 2004 to evaluate the medical center-level hospital.

"Progress" never ends, Wanfang Hospital continues to improve the health and quality of the people, constantly makes breakthroughs in medical treatment, service, teaching, research and other aspects, and cooperates with medical institutions around the world to expand the depth and breadth of Taiwan's medical profession and become a world-class university hospital.

Contact Information

No.111, Sec. 3, Xinglong Rd., Wenshan Dist.,
Taipei City 11696, Taiwan

Tel +886-2-2930-7930 ext. 7766
Fax +886-2-8662-1135
Email ims@w.tmu.edu.tw



Founded in 2008

TMU SHUANG HO HOSPITAL

Established in 2008, Shuang Ho Hospital provides comprehensive outpatient, inpatient, and emergency services across more than 40 specialties and sub-specialties. With a capacity of 1,600 beds, the hospital has earned Joint Commission International (JCI) accreditation in 2009, 2012, 2015, and 2018.

Over the years, Shuang Ho Hospital has been honored with numerous prestigious awards, including the National Quality Award (NQA), the National Healthcare Quality Award (NHQA), and the Symbol of National Quality (SNQ). The hospital has also achieved various accreditations, such as the Association for the Accreditation of Human Research Protection Programs (AAHRPP). On March 1, 2024, Shuang Ho Hospital received an excellent rating in medical accreditation and achieved teaching hospital accreditation, officially becoming a medical center.

Shuang Ho Hospital not only provides the most comprehensive critical and emergency medical system for the public. It also serves as a training center for senior ambulance technicians in New Taipei City and manages the city’s Emergency Operations Center (EOC), coordinating a network of hospitals for disaster response.

The hospital has established a “Hereditary Kidney Disease Diagnosis and Treatment Center” to serve the needs of patients with kidney disease in Taiwan. Continuously upgrading with advanced medical equipment, Shuang Ho Hospital manages the “Taiwan Health Center in the Republic of the Marshall Islands” project for the Ministry of Health and Welfare. It is committed to the concept of “medicine without borders.”

Shuang Ho Hospital is dedicated to providing innovative, high-quality care and service to patients. It is on a mission to care, serve, and commit to excellence in healthcare.



Contact Information

No.291, Zhongzheng Rd., Zhonghe Dist.,
New Taipei City 23561, Taiwan

Tel +886-2-2249-0088
ext. 8809, 8803, 8804, 8682
Email ims@tmu.edu.tw

Founded in 2019

TMU HSIN KUO MIN HOSPITAL

Hsin Kuo Min Hospital is the fourth affiliated hospital of Taipei Medical University, which is aiming to become one of the world’s top medical schools.

Hsin Kuo Min Hospital has a strong and professional medical team of high quality. Orthopedic surgeons specialize in prevention, diagnosis and treatment of bones, joints, ligaments, tendons, muscles and nerves disorders. Physicians in the department have expertise in all areas of orthopedics, including minimally invasive surgery, spine disorders, joint reconstruction and revision, foot and ankle injuries, hand surgery, and trauma. The Department of Rehabilitation Medicine provides physical therapy, occupational therapy, and other services. We provide rehabilitation services for patients with various musculoskeletal disorders, injuries, or diseases.

To satisfy people’s needs, the hospital set up a general service center that includes clinics of nephrology, urology, neurology, immunology and rheumatology, hepatobiliary gastroenterology, and dermatology specialties. There is also a comprehensive hemodialysis center that allows hemodialysis patients to receive high-quality vascular access care and treatment.

Hsin Kuo Min Hospital continually upgrades and improves the quality of medical management system, and provides the best quality and service to the people and local community.



Contact Information

No. 152, Fuxing Rd., Zhongli Dist., Taoyuan City
320, Taiwan

Tel +886-3-4225180
Tel +886-3-4228925
Email skmh@skmh.tmu.edu.tw

Founded in 2013

TMU TAIPEI CANCER CENTER

TMU Taipei Cancer Center is the first cancer center in Taiwan that provides comprehensive services from cancer prevention, screening, diagnosis, treatment, to long-term follow-up and consultation.

Our multidisciplinary care team, led by cancer physicians including nurses, pharmacists, nutritionists, social workers, psychologists, and other medical professionals, provides personalized care and treatment plans. With the assistance of the Molecular Tumor Board, the clinicians develop individualized cancer treatments and precision medicine for each patient.

Through the expertise of the internationally recognized Taipei Medical University Translation Research Center, we combine newly developed treatment plans with current therapies to maximize the outcomes. In addition, the Taipei Cancer Center provides new and effective therapies for difficult-to-treat and late-stage cancer patients.

The TMU Proton Center, operated by the end of July 2022, will provide fourth generation proton therapy with pencil-beam technology and cone beam CT navigation. This new radiotherapy technology will greatly enhance the quality of medical care and outcomes for patients with cancer.

Contact Information

No.250, Wuxing St., Xinyi Dist.,
Taipei City 11031, Taiwan

Tel +886-2-6636-9060
Fax +886-2-6639-7181
Email itcc@h.tmu.edu.tw



Founded in 2017

TMU TAIPEI NEUROSCIENCE INSTITUTE

At Taipei Medical University (TMU), our "TMU One Campus" vision unites the diverse talents from TMU Hospital, Wan Fang Hospital, Shuang Ho Hospital, and the entire TMU system under the Taipei Neuroscience Institute (TNI). By integrating clinical and basic research, we are committed to advancing neuroscience in healthcare, education, research, and talent development. We strive to build a collaborative and supportive community where we are in harmony, share, and aim for mutual benefit. Join us on our inspiring journey to transform neuroscience and create a harmonious TNI family where everyone thrives.

Established in 2018, the Taipei Neuroscience Institute (TNI) was founded by Superintendent Yong-Kwang Tu, bringing together 123 physicians from our three affiliated hospitals. About 40% of these physicians are from Shuang Ho Hospital, while Wan Fang Hospital and Taipei Medical University Hospital each contribute approximately 30%. This integration achieves our goal of uniting physicians from all three hospitals, leveraging diverse talents and resources to strengthen the development of clinical neuroscience. In December 2023, Professor Yung-Hsiao Chiang became our second Superintendent, leading a dedicated team, they continue to unite physicians from our affiliated hospitals and professors from the Research Center for Neuroscience (NRC), driving forward our mission to advance clinical neuroscience.

Taipei Medical University established the Taipei Medical University Research Center for Neuroscience (NRC) in 2018. The NRC consists of 107 faculty and physicians from TMU, with approximately 80% under the age of 60 and about 70% holding professor or associate professor positions. It actively encourages young scholars to engage in research, sustaining education and fostering talent. TNI and NRC currently integrate nine major specialized neurological medical teams, including the Stroke Team, Spine Team, Neurodegenerative Disease Team, Pain Disorder Team, Sleep Team, Vertigo Team, Neuro-Immunology and Peripheral Neuropathy Team, Pediatric Neurology and Neurosurgery Team, and Neurotrauma Team, with the goal of leading Taiwan's neurological medicine. Each team sets specific integration and development goals and strategies based on their professional fields and holds regular meetings. To leverage the HIS 3.0 system, TNI establishes consensus standards for ICD Coding in clinical practice across affiliated hospitals. Looking ahead, it aims to advance Neurorestoration through the development of Neuromodulation and Brain-Computer Interface (BCI) technologies.

Contact Information

No. 291, Zhongzheng Rd., Zhonghe Dist.,
New Taipei City 23561, Taiwan

Tel +886-2-2249-0088 ext. 2291
Email tmu.tni@tmu.edu.tw



Founded in 2024

TAIPEI MUNICIPAL XINGAI RESIDENTIAL LONG TERM CARE INSTITUTION

Contact Information

1F, No. 250, Xingshan Rd., Neihu Dist.,
Taipei City 114066, Taiwan

Tel +886-2-27963886

Email xingai.tmu@gmail.com

Smart Long-term Care, Led by TMU.

Xing'ai Residential Long-Term Care Institution, opened in May 2024. Operated by Taipei Medical University (TMU) under the commission of the Taipei City Government, this new-model long-term care facility is located in the Neihu District.

Covering an area of approximately 2,800 square meters, the institution accommodate up to 79 residents. TMU has introduced advanced technology and equipment, such as electronic fencing, facial recognition, bedside care TOF (Time of Flight) sensing system, smart beds, telemedicine, and rehabilitation system 2.0 for capability recovery, aiming to provide innovative and intelligent care.

The facility also integrates various intelligent information systems including electronic whiteboards, smart backend management, and a medical HIS (Hospital Intelligent System), allowing staff to focus more on interaction and care for the elderly, while reducing caregiver workload and stress.

Xing'ai serves as a model for modern residential long-term care and marks a significant milestone for TMU. Designed according to the "3H" concept, it integrates elements of hotels, homes, and hospitals into the social housing environment. The facility offers long-term medical care, a hotel-like exterior, reception lobby, and home-like spaces that ensure privacy.

With the vision of "Three Hearts, Five Completeness, Six Collaborations, and Ten Innovations," Xing'ai aspires to become a strong support system for disadvantaged families and elderly residents of Taipei City, setting a new standard for innovative long-term care in Asia.



HEALTH CARE BEYOND BORDERS

The first university to establish medical teams towards African countries in Taiwan.

Taiwan, as a member of the international civil society, cannot be excluded. In order to represent the humanitarian spirit and align with the National diplomatic policy, TMU has been dedicated to humanitarian aid by allocating resources from all the hospitals. Since 2003, TMU has set up a student service team and traveled to Cambodia, Malawi, Eswatini, Nepal and other countries to provide volunteer medical and health care services. In 2009, the first medical team was dispatched to the Kingdom of Eswatini in Africa to provide medical services, professional training and public health prevention. Through professional medical cooperation to foster diplomatic relations and to establish partnerships with other countries. By the end of 2022, TMU has sent more than 300 experts to 12 countries to execute health related projects, with ongoing cooperation in countries such as Eswatini, Marshall Islands, and Somaliland.

The Kingdom of Eswatini

We have devoted ourselves in the Kingdom of Eswatini for 15 years, and we offer diversified and comprehensive medical services to strengthen the medical resources and functions of local community. Our efforts have been recognized by numerous international and diplomatic contribution awards, and in 2021, we were awarded the National Quality Silver Award. The healthcare collaboration includes :

- (1) Medical services with fundamental humane care
- (2) Internship program and national examination system for doctors after their return to the Eswatini
- (3) To conduct public health research and prevention in communities throughout the country
- (4) Enhancement of early cancer diagnosis and integrated care system
- (5) Regular royal health check to reinforce the friendship between two countries

The Republic of Marshall Islands

"We have many diplomatic countries, but Taiwan is the only country that helps us to train local medical

personal," said by the Minister of Health of Marshall Island. It is evidence that over the past 10 years, TMU has spared great efforts in nurturing medical professionals in the island. The first physician completed his residency training in Taiwan and return in 2023 to establish an endoscopy team in Marshall island. In addition, TMU has reached every atoll to do community screening and health education, working with local NGOs to prevent and treat the national disease of diabetes in the country. The healthcare collaboration includes :

- (1) Medical services with fundamental humane care
- (2) Internship and residency training for Marshall island's medical students in Taiwan
- (3) Community-based chronic disease screening and health education
- (4) Nutrition education for local students

The Republic of Somaliland

In 2022, the University expanded into East Africa, establishing medical and health partnership with the Republic of Somaliland as a second long-stay medical mission. We provide medical services as professional training and equipment donations at the Hargeisa Group Hospital in the capital of Somaliland.

Student Volunteer Team

Since 2007, teachers and students in the School of Dentistry have formed the "South India Overseas Medical Service" team to provide free dental care service in South India. The service is mainly offered to Tibetan communities, Tibetan Buddhist monasteries, service centers for the disabled, and primary and secondary schools in remote areas. The service team is dedicated to promoting oral disease prevention.

The team works with the local communities and set up temporary dental clinics in hospitals and clinics that didn't have ones. With portable dental treatment boxes and materials, the team managed to provide mid to long-term dental cares in the most difficult environment.

After ten years of dedicated service in South India, the team moved to Nepal in 2017 and cooperated with "METTA Volunteers" group to start providing service at local primary and secondary schools, Tibetan monasteries, and Tibetan primary and secondary schools in Nepal. Since then, the team has won three awards in the "Regional Peace Volunteer Group Excellence Competition" by the "National Youth Commission of the Executive Yuan.



LEAD REGIONALLY, CONNECT GLOBALLY



Lead regionally, connect globally

TMU engages with a wide range of academic institutions and business partners to respond to healthcare needs both at home and worldwide. Our extensive professional network benefits the identification of strategic solutions to our common problems. Our high-caliber teaching and research staffs actively participate in diverse international activities that help the university develop and deliver top-tier research innovations and educational programs.

Strategic global partnerships

We promote student and staff exchanges for educational collaborations and research through our partnerships worldwide. Our strategic partnerships with over 220 institutions such as Case Western Reserve University, Hokkaido University, Imperial College London, Johns Hopkins University, University of Lille, and University of Southern California have benefited both our academics and students through exchange and training initiatives and research collaboration.

Active outbound mobility

Each year, more than 400 of our students take part in learning activities overseas. They not only explore studying and living abroad, but also broaden their academic horizons and diversify their cultural exposure in locations ranging from Europe to sub-Saharan Africa. Some engage in clinical observation at teaching hospitals and care centers abroad to understand different healthcare systems; others serve through volunteer service, conduct thesis research, or work with scientists at partner institutions to enhance their skills and knowledge.

Growing inbound students

We have welcomed students from more than forty nations to join the TMU family. Our ten colleges and affiliated hospitals regularly host international students for short-term programs, medical electives, and research or laboratory internships. These visiting students work with our faculty members, researchers, and clinical professionals to reinforce their learning in different contexts. Supportive local staff and students help short-term and student visitors gain valuable learning experience while living in Taipei, the culturally diverse capital.

International dual degree programs

In addition to short-term overseas exchanges, TMU students are encouraged to expand their academic experience at our partner institutions through collaborative education programs. As of June 2024, TMU offers 33 dual degree programs with partner institutions worldwide including Biomedical Materials and Tissue Engineering, Bioinformatics, Nutrition and Health Sciences, Pharmacy, Dentistry, Respiratory Therapy, Nanomedicine, Nursing, Mind, Brain and Consciousness, and Public Health. Our students benefit from innovative curriculum design as well as from studying and living in a different country. Such in-depth, cross-cultural exposure enhances their scholarly development and often opens doors to international opportunities in their future careers.

Focused research collaborations

Research collaboration is another key focus of TMU's internationalization. Our clinical professionals and scientists are encouraged to work with their peers around the globe to foster synergy in biomedical research. To support this, TMU is committed to working with likeminded institutions to establish mechanisms for international collaborations with a focus on staff mobility and joint research.

We have formed several academic alliances to facilitate dialogues among researchers to identify potential joint research activities, including training of young scientists, exchange and visits of researchers, sharing of research resources, and execution of joint research projects. Many of our faculty members are experienced in conducting international research projects, leading to TMU's track record in winning NSTC (National Science and Technology Council) grant for projects that support Taiwan's development agenda. In addition to public funding, TMU also set aside financial aid to support international research collaborations, encouraging high-performing academics to continuously facilitate bilateral and multi-lateral exchange of perspectives and expertise to create shared benefits. With a diverse portfolio of symposiums and seminars, networks of academics, and joint research projects, TMU researchers have rapidly expanded their footprint and around one-third of our scientific output has an international connection. Activities as such are expected to grow further in the coming years, and we welcome researchers from around the world to join our exciting journey of innovating biomedical research and healthcare for our communities.

To know more about the TMU experience, visit the University's Website at <https://oge.tmu.edu.tw>

A WELCOMING CAMPUS FOR INTERNATIONAL STUDENTS

International students from more than 45 nations have chosen TMU for its extensive laboratories, research opportunities and all English graduate programs.

Our Xinyi campus is a few minutes' walk from Taipei's trendiest entertainment and shopping district; also nearby are the famous hiking trails on Four Beasts Mountain and Elephant Mountain. Reasonable living costs and safe streets make Taipei an ideal destination for students. The excellent public transit system includes a bicycle depot on campus and a subway line that is a few hundred yards away.

Excellent academic offerings

TMU has offered an optimal environment for education, research and personal growth for over 50,000 graduates who provide health care service in Taiwan and overseas.

Praised highly in both international and national evaluations, TMU's programs received top rankings on four primary criteria, including ambitious goals for globalization and development strategy, excellent curriculum for local and international students, and support services for international students' daily lives. Our all-English degree programs and the vast expansion of overseas internships also won highly positive reviews.

Support to international students

TMU is committed to facilitating ease of adjustment for new students with technology-assisted information dissemination and ample resources on campus. The University canteen offers a good selection of food that accommodates our diverse international student and staff. The on-campus copy shop and convenience stores provide a wide range of supplies that cater to students' academic and daily lives. Sports lovers may visit our competition-size swimming pool with a large whirlpool spa, steam rooms and dry saunas, a weight room, table tennis room, and studio for yoga and other physical education classes. Support services for international students include free shuttle service between our campuses and local transit stations, a campus counseling center, prayer spaces, and a Muslim prayer room with ablution facilities, as well as well-furnished laboratories with bilingual training on the operation of all high-tech equipment.

the Ministry of Education (MOE), and the National Science and Technology Council (NSTC). Many of these scholarships provide subsidies for tuition fees and living expense to the awardees and are open for eligible applicants to apply directly from their home country.

To know more about the TMU experience, visit the University's Website at

<https://oge.tmu.edu.tw/>

Scholarships and other financial aid

An extensive scholarship program assists most foreign students with their costs of studying and living in Taipei. Other programs support international students in attending conferences, participating in competitions and taking internships abroad. Full scholarship details are as follows:

TMU Scholarships

Ph.D scholarship (Type A): monthly stipend with tuition waiver.

Master scholarship (Type B): monthly stipend with tuition waiver

Graduate scholarship (Type C): Tuition waiver.

Awards of scholarship are renewed annually, subject to the awardees' academic performance.

Taiwan government scholarships

Taiwan government scholarships are administered by a number of government bodies including Taiwan International Cooperation and Development Fund (TaiwanICDF), the Ministry of Foreign Affairs (MOFA), the Ministry of Education (MOE), and the National Science and Technology Council (NSTC). Many of these scholarships provide subsidies for tuition fees and living expense to the awardees and are open for eligible applicants to apply directly from their home country.





**TAIPEI
MEDICAL UNIVERSITY**



Taipei Medical University

Xinyi Campus :

ADD : No.250, Wuxing St., Xinyi Dist., Taipei City 11031, Taiwan
TEL : 886-2-27361661
WEBSITE : eng.tmu.edu.tw

Shuangho Campus :

ADD : No.301, Yuantong Rd., Zhonghe Dist., New Taipei City 235, Taiwan
TEL : 886-2-66202589
WEBSITE : eng.tmu.edu.tw



Taipei Medical University Hospital

ADD : No.252, Wuxing St., Xinyi Dist., Taipei City 11031, Taiwan
TEL : 886-2-27372181
WEBSITE : english.tmu.h.org.tw



Taipei Municipal Wanfang Hospital (Managed by Taipei Medical University)

ADD : No.111, Sec. 3, Xinglong Rd., Wenshan Dist., Taipei City 11696, Taiwan
TEL : 886-2-29307930
WEBSITE : www.wanfang.gov.tw



Taipei Medical University - Shuang Ho Hospital, Ministry of Health and Welfare

ADD : No.291, Zhongzheng Rd., Zhonghe Dist., New Taipei City 23561, Taiwan
TEL : 886-2-22490088
WEBSITE : www.shh.org.tw



Taipei Medical University - Hsin Kuo Min Hospital

ADD : No. 152, Fuxing Rd., Zhongli Dist., Taoyuan City 320, Taiwan (R.O.C.)
TEL : +886-3-4225180
Fax : +886-3-4228925
Email : skmh@skmh.tmu.edu.tw



TMU, Taipei Cancer Center

ADD : No.250, Wuxing St., Xinyi Dist., Taipei City 11031, Taiwan
TEL : 886-2-66369060
WEBSITE : www.cancertaipei.tw



Taipei Neuroscience Institute

ADD : No. 291, Zhongzheng Rd., Zhonghe Dist., New Taipei City 23561, Taiwan
TEL : 886-2-22490088 Ext 2291
WEBSITE : www.taipeineuro.org.tw



Taipei Municipal Xingai Residential Long Term Care Institution

ADD : 1F, No. 250, Xingshan Rd., Neihu Dist., Taipei City 114066, Taiwan
TEL : 886-2-27963886